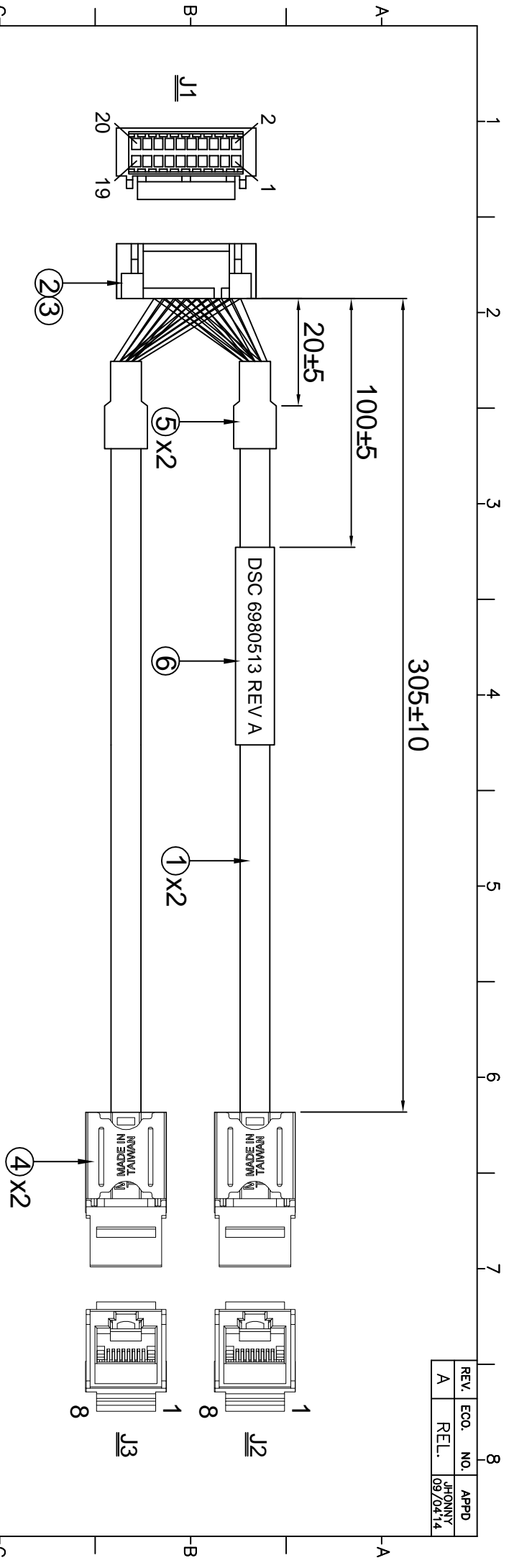
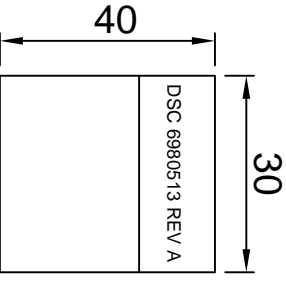


REV.	ECO. NO.	APPD
A	REL.	JHONNY 09/04'14



19	EMPTY	_____	20	EMPTY	_____
17	EMPTY	_____	18	EMPTY	_____
15	BROWN	TWISTED	16	BROWN	TWISTED
13	LIGHT BROWN	PAIR	14	LIGHT BROWN	PAIR
11	LIGHT BLUE	TWISTED	12	LIGHT BLUE	TWISTED
9	BLUE	PAIR	10	BLUE	PAIR
7	ORANGE	TWISTED	8	ORANGE	TWISTED
5	WHITE	PAIR	6	WHITE	PAIR
3	GREEN	TWISTED	4	GREEN	TWISTED
1	LIGHT GREEN	PAIR	2	LIGHT GREEN	PAIR
WIRE CONNECTION TABLE			WIRE CONNECTION TABLE		
J1	WIRE COLOR	J2	J1	WIRE COLOR	J3



6	LABEL	1PC	W=30.0MM, L=40.0MM, COMMENT:SEE "A"	
5	H.S. TUBE	2PCS	LD=Ø6.0MM, UL224, COLOR:BLACK, L=15MM 125°C, 600V, VW-1 P/N:H-2(+)&RSFR-H 125°C, 300V, VW-1 P/N:H-2(CB)&RSFR(CB)	E255394 & E203960
4	KEYSTONE TOOLLESS	2PCS	BODY: ABS, UL94V-0, JACK: 8P8C GOLD PLATED PCB: FR-4/UL-94V-0, IDC CAP: ABS, UL94V-0 IDC BODY: ABS, UL94V-0, IDC PIN: BRONZE&TINNED WIRE RANGE: #26~#22 EPN P/N: EKTVM-UTWH	
3	CONTACT	16PCS	MATERIAL: PHOSPHOR BRONZE, TIN PLATED WIRE RANGE: #30~#26, JST P/N: S9HD-0020GA-P0.2	
2	20P HOUSING	1PC	MATERIAL: PBT, UL94V-0, COLOR: NATURAL WHITE PITCH: 1.25MM, 1X8 JST P/N: GDR-20V-S	E60369
1	CABLE	2PCS	CAT 5E UTP#26x4PR(LIGHT GREEN, GREEN, WHITE, ORANGE, LIGHT BLUE, BLUE, LIGHT BROWN, BROWN, JACKET: GRAY, OD=Ø5.5MM	E186601
No.	ITEM	Q'TY	DESCRIPTION	UL NO.

- NOTES:
1. ALL DIMENSIONS ARE "MM".
  2. ANY OPEN, MISWIRING, SHORT & INTERMITTENT ARE NOT PERMITTED.
  3. Connection Resistance : 2.0Ω
- Insulation Resistance : 20MΩ  
 Hi-POT Voltage : 300V DC  
 Hi-POT Duration : 10ms
4. THE PRODUCT MUST BE COMPLY WITH THE DIRECTIVE OF ROHS.
  5. PACKAGE: 1PC/BAG.



X:±	XX:±	X':±	XX':±
.X:±0.5	.XXX:±	.X':±	.XXX':±
PART NO.(INTENDED USE)		TITLE:	
6980513 REV A		CABLE HARNESS, 2X10, 1.25MM CONNECTOR TO RJ PANEL MOUNT	
APPD:	JHONNY 09/04'14	DWG NO.:	GL-GH722
CHKD:	WUZHUAN 09/04'14	SCALE	SHEET REV.
DRI:	YHTJH 09/04'14	NONE	1/1 A